

14 Iron Hill Street  
 Essex Weymouth, MA 02189  
 781.340.0882 TEL 781.340.0885 FAX  
 781.340.0886

**TOWN OF BARNSTABLE**  
**Barnstable Public School**  
655 Halmours Road  
Barnstable, MA 02701

[illegible]

Floor Plans, Notes & Schedules	Project No.	Scale
	1001	AS NOTED
	Year	Drawing No.
	7-12-10	A-1
	Drawn by	
	PMW	
	Checked by	
	PMW	

## 33

TAG	LOCATION	FAN TYPE	CFM	ESP (IN W/C)	SPEED (RPM)		DRIVE	ELECTRICAL DATA				WEG. MODEL #	REMARKS
					FAN	MOTOR		HP	V	PH	Hz		
EP-1	ROOF	CENTRIFUGAL	658	375	1346	1725	66.17	14	115	1	60	GREENWICH GR-10	

**ALL INFORMATION CONTAINED HEREIN IS UNCLASSIFIED**

1. PROVIDE CARDS, MATERIALS AND EQUIPMENT NECESSARY TO COMPLETE DEMOLITION WORK INDICATED.
2. IN ADDITION TO THE WORK SPECIFICALLY SHOWN, DIT, MOVE OR REMOVE FITTING AS NECESSARY TO PROVIDE ACCESS OR ALLOW ALTERNATION AND NEW WORK TO PROCEED.
3. IN AREAS INCLUDED AS A PART OF THE CONTRACT, REMOVAL OR REPAIR OF MACHINERY OR OTHER CONTRACTORS' REMOVALS, THERE SHALL BE NO USEFUL PURPOSE, SUCH AS ADJACENT FITTING, TENDRIT OR WIRING, REMOVE ALL FITTING THAT PROTRUDE FROM WALL.
4. CLEAN AND REMOVE SURFACE FINISHES AS NEEDED TO INSTALL NEW WORK AND FINISHES AS INDICATED.

## WITH A WORMHOLE-LIKE TRANSITION BETWEEN ADJACENT

- EXCEPT FOR ITEMS OR MATERIALS INDICATED TO BE REUSED, SALVAGED, REINSTALLED OR OTHERWISE INDICATED TO REMAIN THE OWNER'S PROPERTY, DEMOLISHED MATERIALS SHALL BECOME THE CONTRACTOR'S PROPERTY AND SHALL BE REMOVED FROM THE SITE.
7. THE CONTRACTOR SHALL PROVIDE TO THE OWNER'S DOCUMENTATION THAT ALL MATERIALS HAVE BEEN LEGALLY OBTAINED AS REQUIRED BY ALL GOVERNING CODES AND REGULATIONS.
8. REPAIR MATERIALS SHALL BE SIMILAR TO EXISTING MATERIALS. WHERE DIFFERENTIALS ARE UNAVAILABLE OR NOT KNOWN, THE CONTRACTOR SHALL SUBMIT A PROPOSAL FOR THE USE OF EXPOSED SUBSTRATES. USE MATERIALS THAT ARE VISUALLY MATCH EXISTING ADJACENT SURFACES TO THE FULLEST EXTENT POSSIBLE. USE ONLY MATERIALS WHOSE COLOR AND FINISH MATCH THE EXISTING SURFACE TO THE FULLEST EXTENT POSSIBLE. USE COLOR MATCHING EQUIPMENT TO OBTAIN COLOR MATCHES.

DESIGNATION	FEATURE DESCRIPTION	CONNECTION SIZE				REMARKS
		DN	HW	SW	V	
A4	CLASSROOM SINK	12"	12"	7"	7"	

DESIGNATION	FUTURE DESCRIPTION	CONNECTION SIZE				REMARKS
		DN	IN	SAW	V	
A-1	CLASSROOM SINK	12"	12"	2"	2"	

ALL FINAL CONNECTIONS TO CASEWORK SHOPS AND EQUIPMENT SHALL BE BY THE PLUMBING CONTRACTOR.

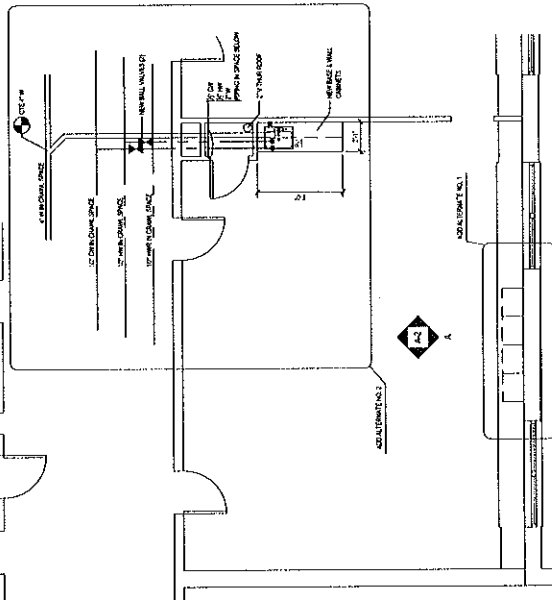
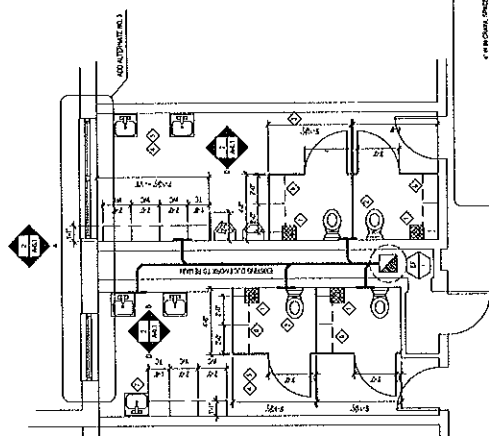
- ALL DOWDALL NETWORKS AND IT'S SERVICES ARE OFFERING 100% FREE  
 AVERAGE 100% OFFER TO ALL DOWDALL NETWORKS AND IT'S SERVICES ARE OFFERING 100% FREE

CODE, ORDINANCES AND REGULATIONS.

- [illegible]

REPORT NUMBER

- [illegible]

[illegible]

1. ☐ **RESEARCH DESIGN**  
 2. ☐ **RESEARCH QUESTIONS**  
 3. ☐ **RESEARCH METHODS**  
 4. ☐ **RESEARCH RESULTS**  
 5. ☐ **RESEARCH CONCLUSIONS**  
 6. ☐ **RESEARCH LIMITATIONS**  
 7. ☐ **RESEARCH RECOMMENDATIONS**  
 8. ☐ **RESEARCH REFERENCES**  
 9. ☐ **RESEARCH APPENDICES**  
 10. ☐ **RESEARCH ACKNOWLEDGEMENTS**  
 11. ☐ **RESEARCH ABSTRACT**  
 12. ☐ **RESEARCH SUMMARY**  
 13. ☐ **RESEARCH INTRODUCTION**  
 14. ☐ **RESEARCH BACKGROUND**  
 15. ☐ **RESEARCH OBJECTIVES**  
 16. ☐ **RESEARCH SIGNIFICANCE**  
 17. ☐ **RESEARCH SCOPE**  
 18. ☐ **RESEARCH LIMITATIONS**  
 19. ☐ **RESEARCH RECOMMENDATIONS**  
 20. ☐ **RESEARCH REFERENCES**  
 21. ☐ **RESEARCH APPENDICES**  
 22. ☐ **RESEARCH ACKNOWLEDGEMENTS**  
 23. ☐ **RESEARCH ABSTRACT**  
 24. ☐ **RESEARCH SUMMARY**  
 25. ☐ **RESEARCH INTRODUCTION**  
 26. ☐ **RESEARCH BACKGROUND**  
 27. ☐ **RESEARCH OBJECTIVES**  
 28. ☐ **RESEARCH SIGNIFICANCE**  
 29. ☐ **RESEARCH SCOPE**  
 30. ☐ **RESEARCH LIMITATIONS**  
 31. ☐ **RESEARCH RECOMMENDATIONS**  
 32. ☐ **RESEARCH REFERENCES**  
 33. ☐ **RESEARCH APPENDICES**  
 34. ☐ **RESEARCH ACKNOWLEDGEMENTS**  
 35. ☐ **RESEARCH ABSTRACT**  
 36. ☐ **RESEARCH SUMMARY**  
 37. ☐ **RESEARCH INTRODUCTION**  
 38. ☐ **RESEARCH BACKGROUND**  
 39. ☐ **RESEARCH OBJECTIVES**  
 40. ☐ **RESEARCH SIGNIFICANCE**  
 41. ☐ **RESEARCH SCOPE**  
 42. ☐ **RESEARCH LIMITATIONS**  
 43. ☐ **RESEARCH RECOMMENDATIONS**  
 44. ☐ **RESEARCH REFERENCES**  
 45. ☐ **RESEARCH APPENDICES**  
 46. ☐ **RESEARCH ACKNOWLEDGEMENTS**  
 47. ☐ **RESEARCH ABSTRACT**  
 48. ☐ **RESEARCH SUMMARY**  
 49. ☐ **RESEARCH INTRODUCTION**  
 50. ☐ **RESEARCH BACKGROUND**  
 51. ☐ **RESEARCH OBJECTIVES**  
 52. ☐ **RESEARCH SIGNIFICANCE**  
 53. ☐ **RESEARCH SCOPE**  
 54. ☐ **RESEARCH LIMITATIONS**  
 55. ☐ **RESEARCH RECOMMENDATIONS**  
 56. ☐ **RESEARCH REFERENCES**  
 57. ☐ **RESEARCH APPENDICES**  
 58. ☐ **RESEARCH ACKNOWLEDGEMENTS**  
 59. ☐ **RESEARCH ABSTRACT**  
 60. ☐ **RESEARCH SUMMARY**  
 61. ☐ **RESEARCH INTRODUCTION**  
 62. ☐ **RESEARCH BACKGROUND**  
 63. ☐ **RESEARCH OBJECTIVES**  
 64. ☐ **RESEARCH SIGNIFICANCE**  
 65. ☐ **RESEARCH SCOPE**  
 66. ☐ **RESEARCH LIMITATIONS**  
 67. ☐ **RESEARCH RECOMMENDATIONS**  
 68. ☐ **RESEARCH REFERENCES**  
 69. ☐ **RESEARCH APPENDICES**  
 70. ☐ **RESEARCH ACKNOWLEDGEMENTS**  
 71. ☐ **RESEARCH ABSTRACT**  
 72. ☐ **RESEARCH SUMMARY**  
 73. ☐ **RESEARCH INTRODUCTION**  
 74. ☐ **RESEARCH BACKGROUND**  
 75. ☐ **RESEARCH OBJECTIVES**  
 76. ☐ **RESEARCH SIGNIFICANCE**  
 77. ☐ **RESEARCH SCOPE**  
 78. ☐ **RESEARCH LIMITATIONS**  
 79. ☐ **RESEARCH RECOMMENDATIONS**  
 80. ☐ **RESEARCH REFERENCES**  
 81. ☐ **RESEARCH APPENDICES**  
 82. ☐ **RESEARCH ACKNOWLEDGEMENTS**  
 83. ☐ **RESEARCH ABSTRACT**  
 84. ☐ **RESEARCH SUMMARY**  
 85. ☐ **RESEARCH INTRODUCTION**  
 86. ☐ **RESEARCH BACKGROUND**  
 87. ☐ **RESEARCH OBJECTIVES**  
 88. ☐ **RESEARCH SIGNIFICANCE**  
 89. ☐ **RESEARCH SCOPE**  
 90. ☐ **RESEARCH LIMITATIONS**  
 91. ☐ **RESEARCH RECOMMENDATIONS**  
 92. ☐ **RESEARCH REFERENCES**  
 93. ☐ **RESEARCH APPENDICES**  
 94. ☐ **RESEARCH ACKNOWLEDGEMENTS**  
 95. ☐ **RESEARCH ABSTRACT**  
 96. ☐ **RESEARCH SUMMARY**  
 97. ☐ **RESEARCH INTRODUCTION**  
 98. ☐ **RESEARCH BACKGROUND**  
 99. ☐ **RESEARCH OBJECTIVES**  
 100. ☐ **RESEARCH SIGNIFICANCE**  
 101. ☐ **RESEARCH SCOPE**  
 102. ☐ **RESEARCH LIMITATIONS**  
 103. ☐ **RESEARCH RECOMMENDATIONS**  
 104. ☐ **RESEARCH REFERENCES**  
 105. ☐ **RESEARCH APPENDICES**  
 106. ☐ **RESEARCH ACKNOWLEDGEMENTS**  
 107. ☐ **RESEARCH ABSTRACT**  
 108. ☐ **RESEARCH SUMMARY**  
 109. ☐ **RESEARCH INTRODUCTION**  
 110. ☐ **RESEARCH BACKGROUND**  
 111. ☐ **RESEARCH OBJECTIVES**  
 112. ☐ **RESEARCH SIGNIFICANCE**  
 113. ☐ **RESEARCH SCOPE**  
 114. ☐ **RESEARCH LIMITATIONS**  
 115. ☐ **RESEARCH RECOMMENDATIONS**  
 116. ☐ **RESEARCH REFERENCES**  
 117. ☐ **RESEARCH APPENDICES**  
 118. ☐ **RESEARCH ACKNOWLEDGEMENTS**  
 119. ☐ **RESEARCH ABSTRACT**  
 120. ☐ **RESEARCH SUMMARY**  
 121. ☐ **RESEARCH INTRODUCTION**  
 122. ☐ **RESEARCH BACKGROUND**  
 123. ☐ **RESEARCH OBJECTIVES**  
 124. ☐ **RESEARCH SIGNIFICANCE**  
 125. ☐ **RESEARCH SCOPE**  
 126. ☐ **RESEARCH LIMITATIONS**  
 127. ☐ **RESEARCH RECOMMENDATIONS**  
 128. ☐ **RESEARCH REFERENCES**  
 129. ☐ **RESEARCH APPENDICES**  
 130. ☐ **RESEARCH ACKNOWLEDGEMENTS**  
 131. ☐ **RESEARCH ABSTRACT**  
 132. ☐ **RESEARCH SUMMARY**  
 133. ☐ **RESEARCH INTRODUCTION**  
 134. ☐ **RESEARCH BACKGROUND**  
 135. ☐ **RESEARCH OBJECTIVES**  
 136. ☐ **RESEARCH SIGNIFICANCE**  
 137. ☐ **RESEARCH SCOPE**  
 138. ☐ **RESEARCH LIMITATIONS**  
 139. ☐ **RESEARCH RECOMMENDATIONS**  
 140. ☐ **RESEARCH REFERENCES**  
 141. ☐ **RESEARCH APPENDICES**  
 142. ☐ **RESEARCH ACKNOWLEDGEMENTS**  
 143. ☐ **RESEARCH ABSTRACT**  
 144. ☐ **RESEARCH SUMMARY**  
 145. ☐ **RESEARCH INTRODUCTION**  
 146. ☐ **RESEARCH BACKGROUND**  
 147. ☐ **RESEARCH OBJECTIVES**  
 148. ☐ **RESEARCH SIGNIFICANCE**  
 149. ☐ **RESEARCH SCOPE**  
 150. ☐ **RESEARCH LIMITATIONS**  
 151. ☐ **RESEARCH RECOMMENDATIONS**  
 152. ☐ **RESEARCH REFERENCES**  
 153. ☐ **RESEARCH APPENDICES**  
 154. ☐ **RESEARCH ACKNOWLEDGEMENTS**  
 155. ☐ **RESEARCH ABSTRACT**  
 156. ☐ **RESEARCH SUMMARY**  
 157. ☐ **RESEARCH INTRODUCTION**  
 158. ☐ **RESEARCH BACKGROUND**  
 159. ☐ **RESEARCH OBJECTIVES**  
 160. ☐ **RESEARCH SIGNIFICANCE**  
 161. ☐ **RESEARCH SCOPE**  
 162. ☐ **RESEARCH LIMITATIONS**  
 163. ☐ **RESEARCH RECOMMENDATIONS**  
 164. ☐ **RESEARCH REFERENCES**  
 165. ☐ **RESEARCH APPENDICES**  
 166. ☐ **RESEARCH ACKNOWLEDGEMENTS**

EXISTING FLOOR PLAN

## PROPOSED RENOVATIONS

**TOILET ROOM RENOVATIONS**  
Barnstable High School  
744 West Main Street  
Barnstable, MA 02601

TOWN OF BARNSTABLE  
Barnstable Public School  
650 Main Street  
Barnstable, MA 02601

Rev: 01/10

No.	Date	Revised Description

This drawing is a preliminary drawing and is not to be used for construction. It is the responsibility of the architect to ensure that all dimensions, materials and construction details are in accordance with the applicable building codes and standards.

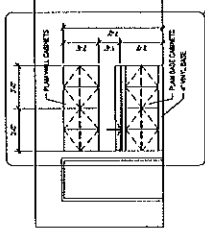
2/10/10 JCS/ARCHITECTURE

Architect's Seal

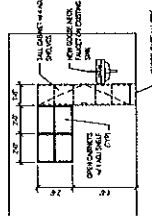
**ELEVATIONS**

Sheet No.	Scale	Notes

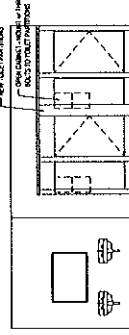
**A-2**



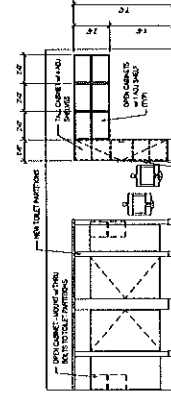
4 ELEVATION - CLASSROOM SINK & CABINETS  
1/4\"/>



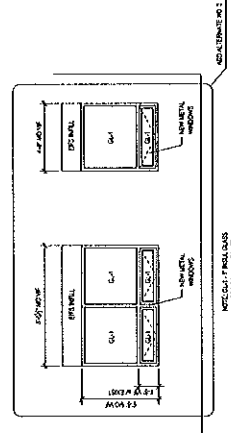
3 ELEVATION - GIRLS TOILET ROOM  
1/4\"/>



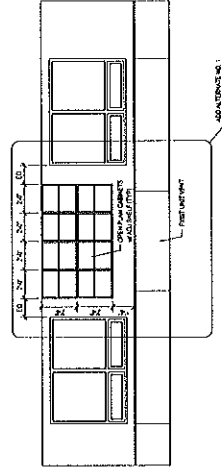
2 ELEVATION - GIRLS TOILET ROOM  
1/4\"/>



1 ELEVATION - BOYS TOILET ROOM  
1/4\"/>



6 ELEVATION - TOILET ROOM WINDOWS  
1/4\"/>



5 ELEVATION - CLASSROOM STORAGE  
1/4\"/>



