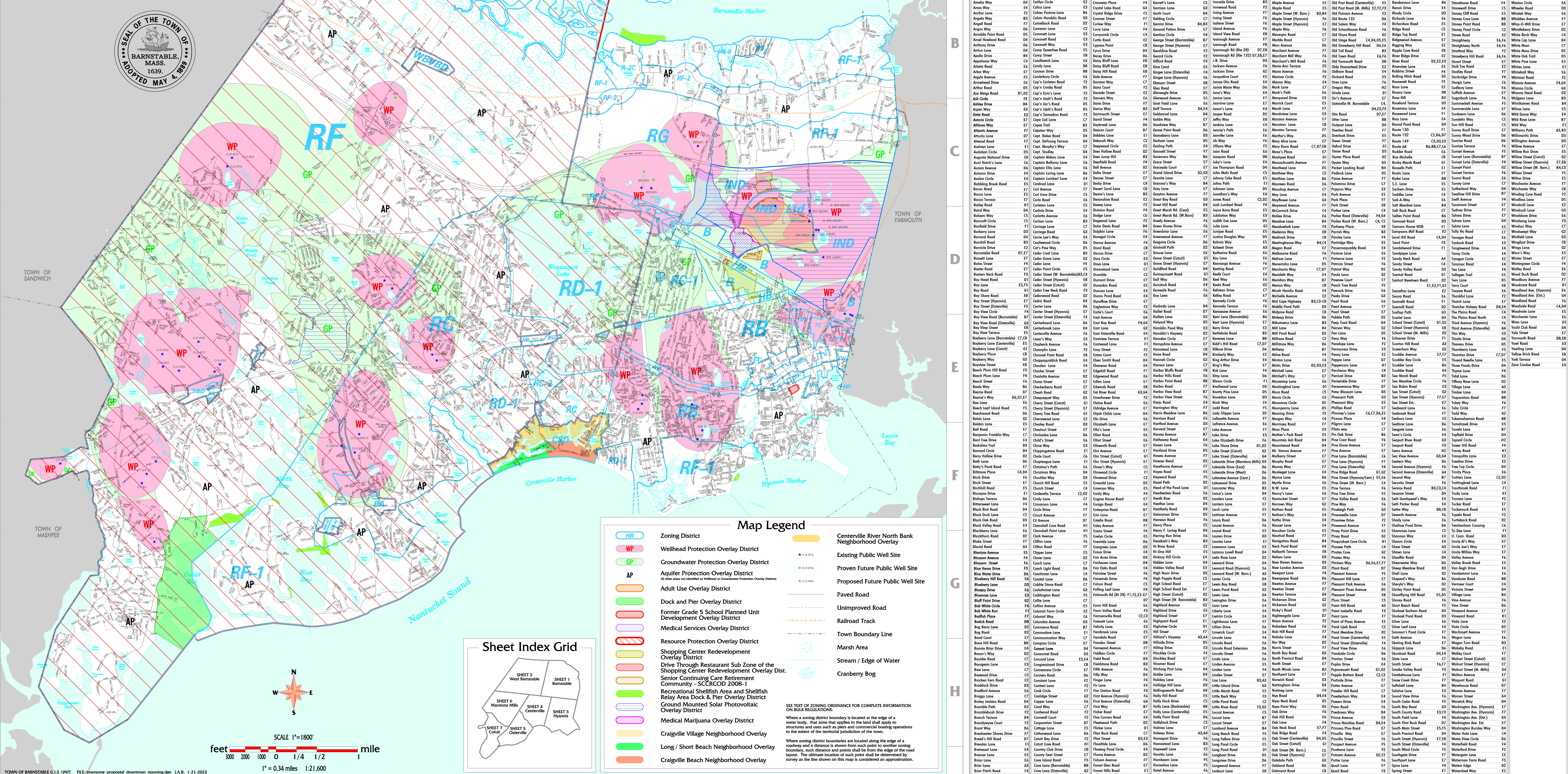
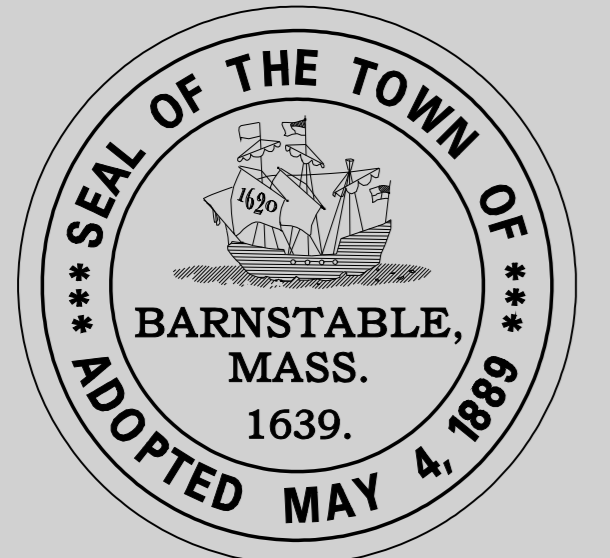


PROPOSED AMENDMENT

to the TOWN ZONING MAP Re-Zoning Downtown Hyannis

JANUARY 21, 2022



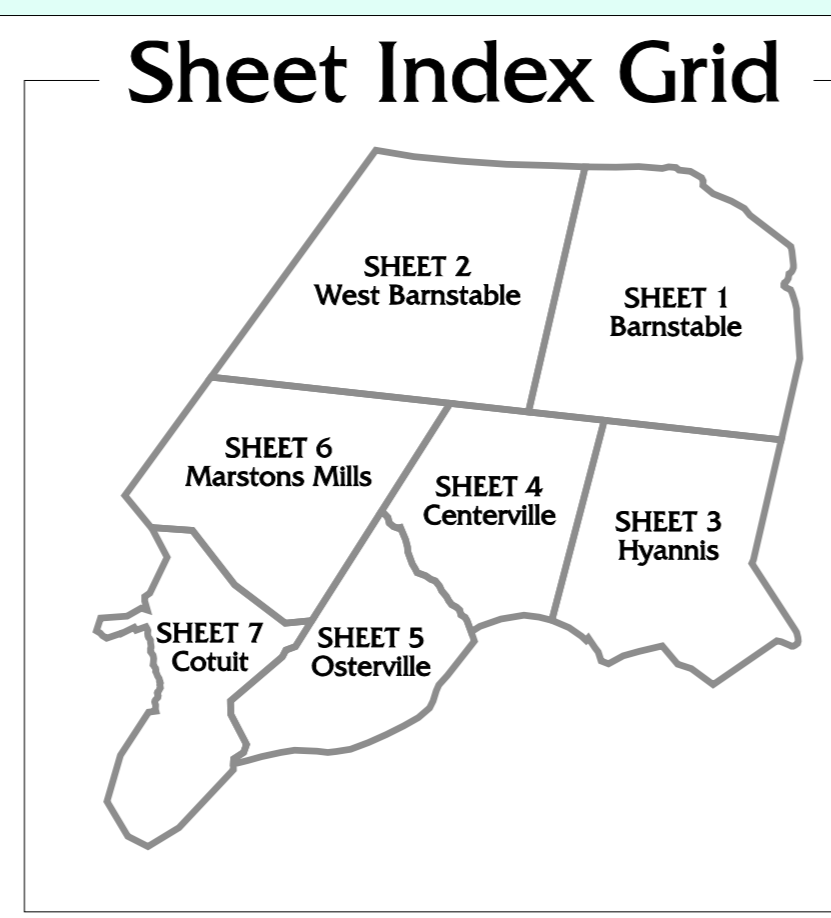
Map Legend

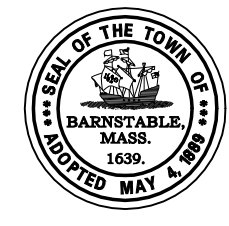
HB	Zoning District	Centerville River North Bank Neighborhood Overlay
WP	Wellhead Protection Overlay District	Existing Public Well Site
GP	Groundwater Protection Overlay District	Proven Future Public Well Site
AP	Aquifer Protection Overlay District	Proposed Future Public Well Site
ADU	Adult Use Overlay District	Paved Road
Dock	Dock and Pier Overlay District	Unimproved Road
FGS	Former Grade 5 School Planned Unit Development Overlay District	Railroad Track
MSD	Medical Services Overlay District	Town Boundary Line
RPO	Resource Protection Overlay District	Marsh Area
SCRD	Shopping Center Redevelopment Overlay District	Stream / Edge of Water
SCA	Senior Continuing Care Retirement Community - SCRCOD 2008-1	Cranberry Bog
SRA	Recreational Shellfish Area and Shellfish Relay Area Dock & Pier Overlay District	
GMSO	Ground Mounted Solar Photovoltaic Overlay District	
MJO	Medical Marijuana Overlay District	
CVN	Craigville Village Neighborhood Overlay	
LSN	Long / Short Beach Neighborhood Overlay	
CBN	Craigville Beach Neighborhood Overlay	

SEE TEXT OF ZONING ORDINANCE FOR COMPLETE INFORMATION ON BULK REGULATIONS.

Where a zoning district boundary is located at the edge of a water body, that zone that applies to the land shall apply to structures and uses such as piers and commercial boating operations to the extent of the territorial jurisdiction of the town.

Where zoning district boundaries are located along the edge of a roadway and a distance is shown from such point to another zoning boundary, such distance and points shall be from the edge of the road layout. The ultimate location of such points shall be determined by survey as the line shown on this map is considered an approximation.

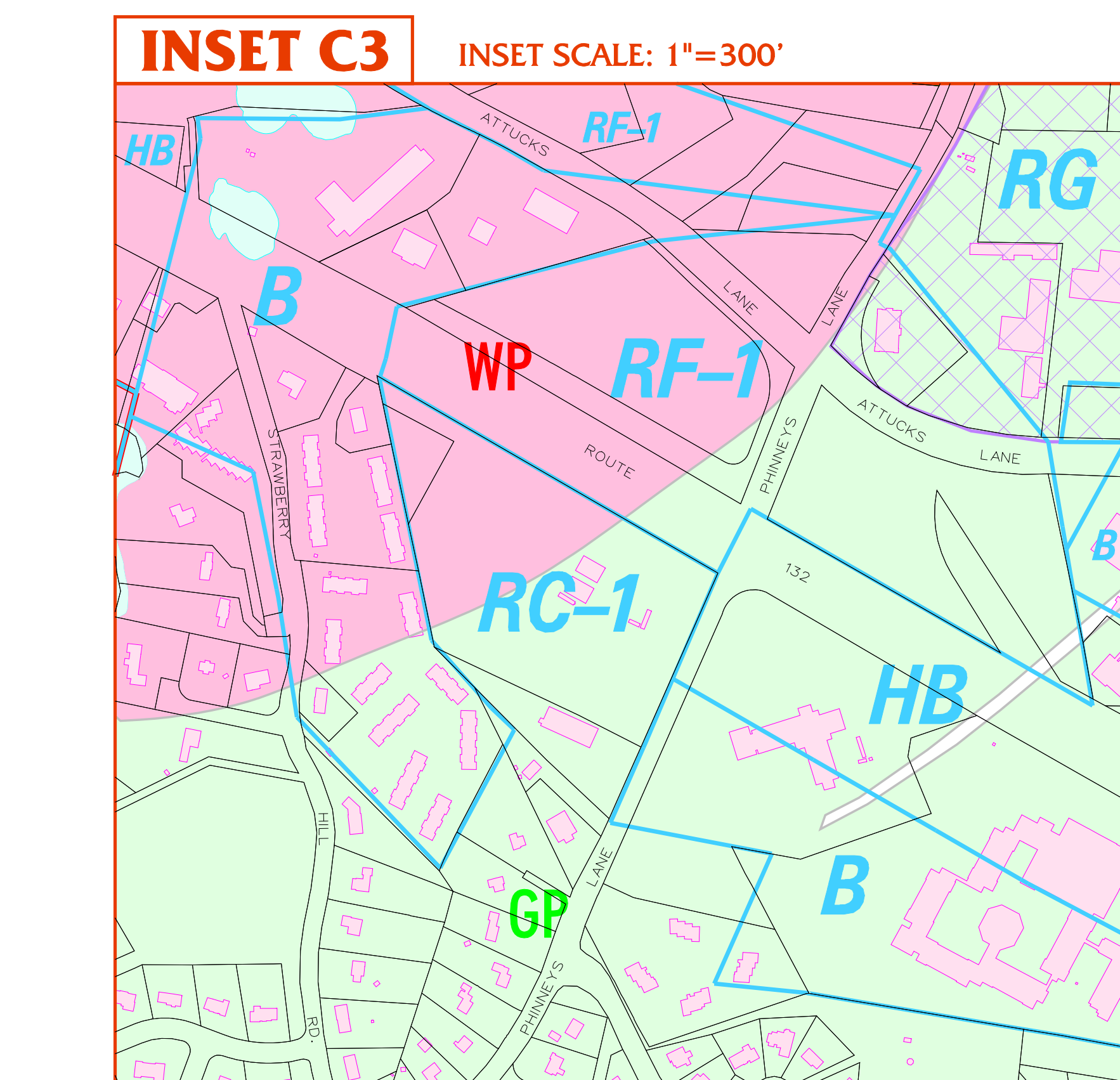
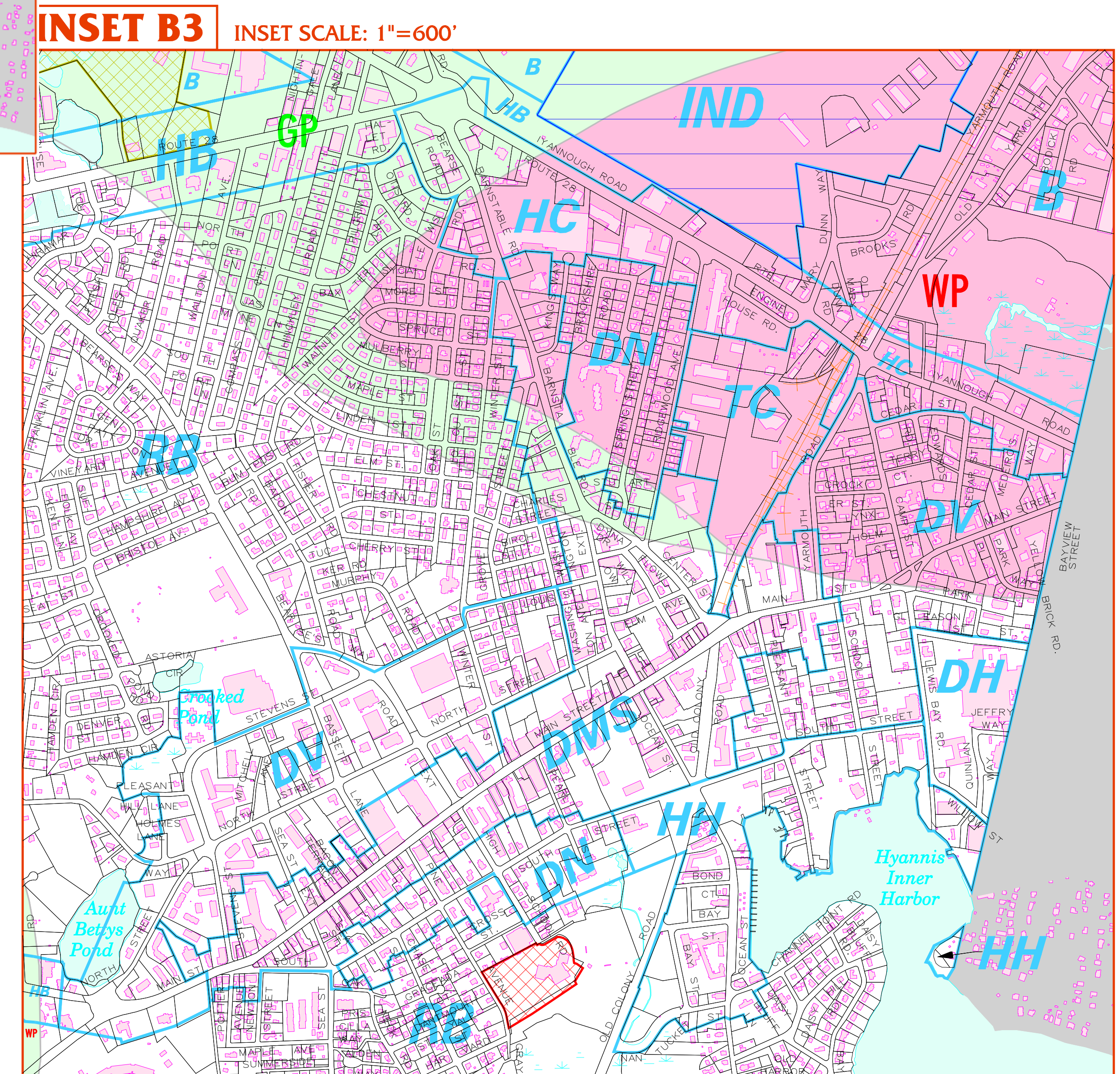
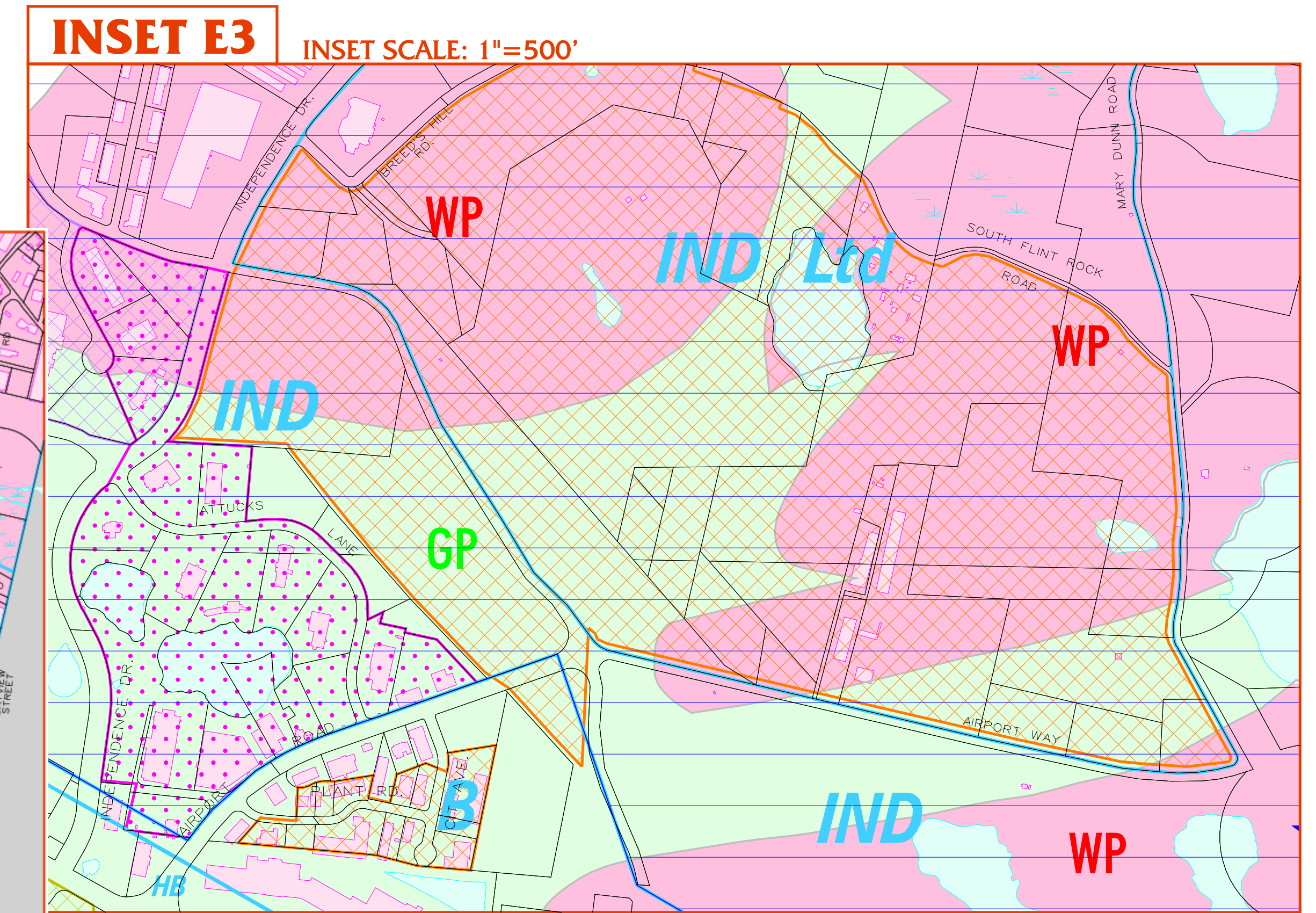
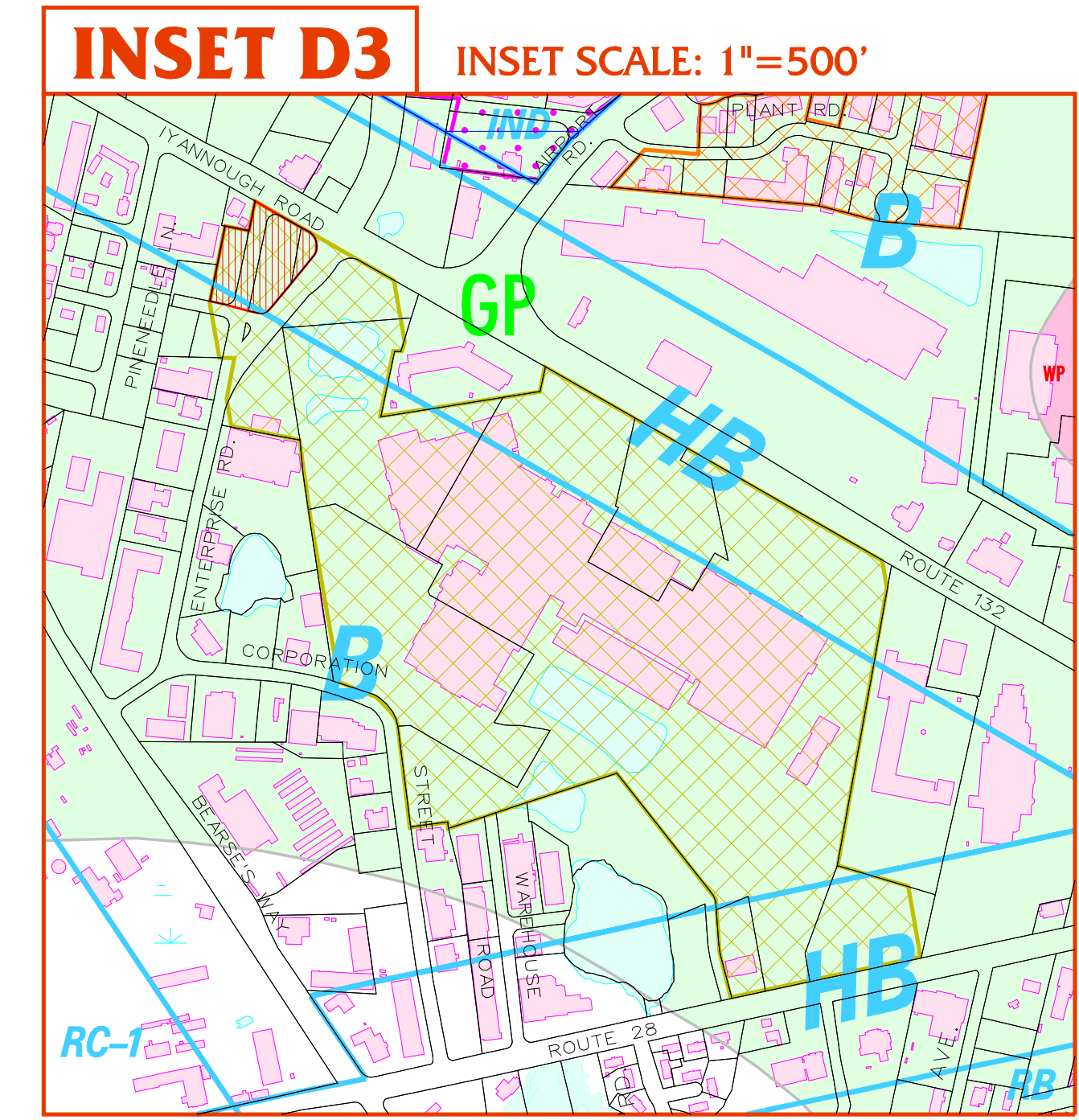
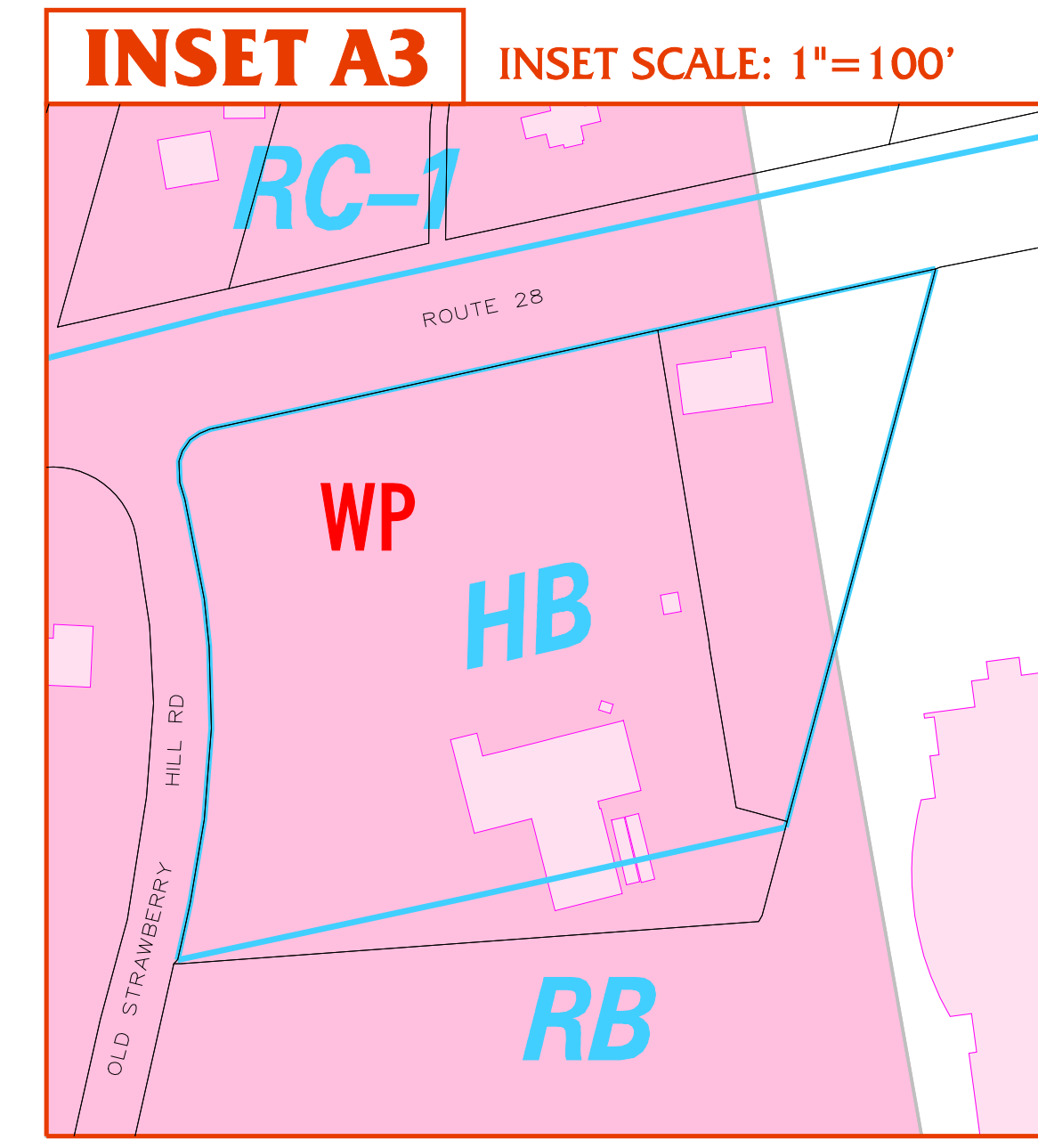
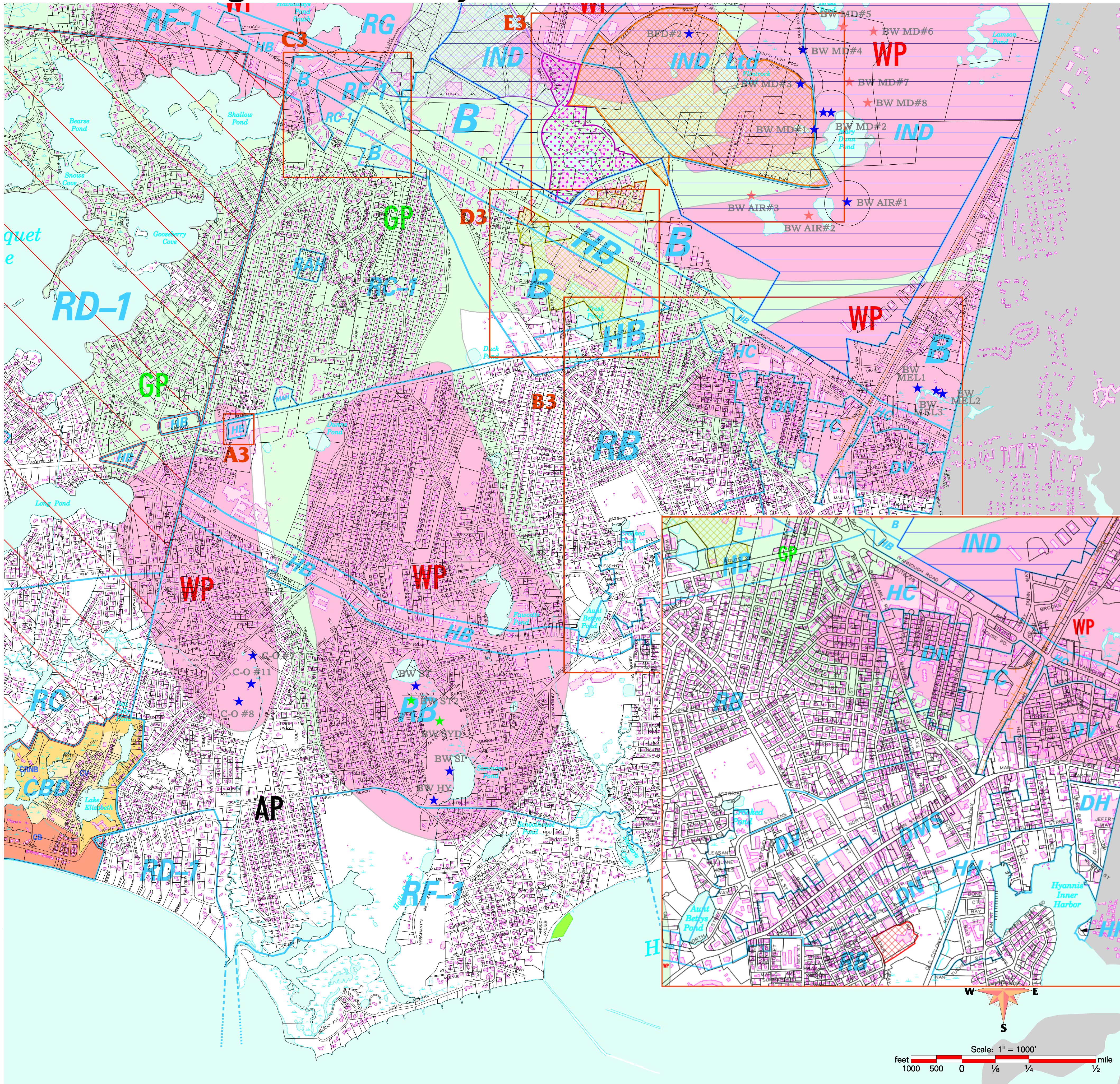




PROPOSED AMENDMENT to the HYANNIS ZONING MAP Re-Zoning Downtown Hyannis

JANUARY 21, 2022

HYANNIS - SHEET 3 OF 7



Map Legend

- | | | | |
|--|--|--|---|
| | Zoning District | | Centerville River North Bank Neighborhood Overlay |
| | Wellhead Protection Overlay District | | Existing Public Well Site |
| | Groundwater Protection Overlay District | | Proven Future Public Well Site |
| | Aquifer Protection Overlay District | | Proposed Future Public Well Site |
| | Adult Use Overlay District | | Parcel Lines (FY 2022) |
| | Dock and Pier Overlay District | | Buildings |
| | Former Grade 5 School Planned Unit Development Overlay District | | Railroad Track |
| | Medical Services Overlay District | | Town Boundary Line |
| | Resource Protection Overlay District | | Marsh Area |
| | Shopping Center Redevelopment Overlay District | | Stream / Edge of Water |
| | Drive Through Restaurant Sub Zone of the Shopping Center Redevelopment Overlay Dist. | | Cranberry Bog |
| | Senior Continuing Care Retirement Community - SCCRCOD 2008-1 | | |
| | Recreational Shellfish Area and Shellfish Relay Area Dock & Pier Overlay District | | |
| | Ground Mounted Solar Photovoltaic Overlay District | | |
| | Medical Marijuana Overlay District | | |
| | Craigville Village Neighborhood Overlay | | |
| | Long / Short Beach Neighborhood Overlay | | |
| | Craigville Beach Neighborhood Overlay | | |
- SEE TEXT OF ZONING ORDINANCE FOR COMPLETE INFORMATION ON BULK REGULATIONS.
- Where a zoning district boundary is located at the edge of a water body, that zone that applies to the land shall apply to structures and uses such as piers and commercial boating operations to the extent of the territorial jurisdiction of the town.
- Where zoning district boundaries are located along the edge of a roadway and a distance is shown from such point to another zoning boundary, such distance and points shall be from the edge of the roadway layout. The ultimate location of such point shall be determined by survey as the line shown on this map is considered an approximation.